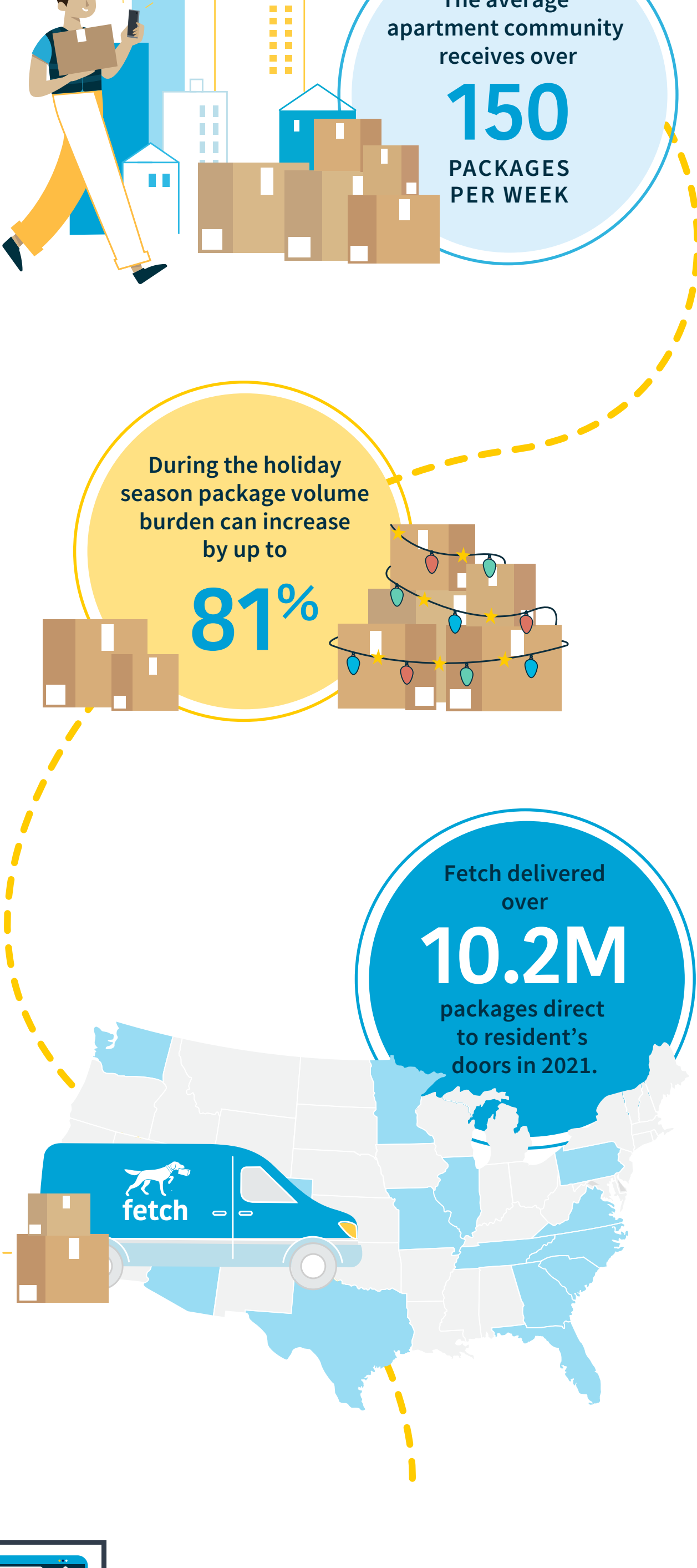


## multifamily gets the package squeeze

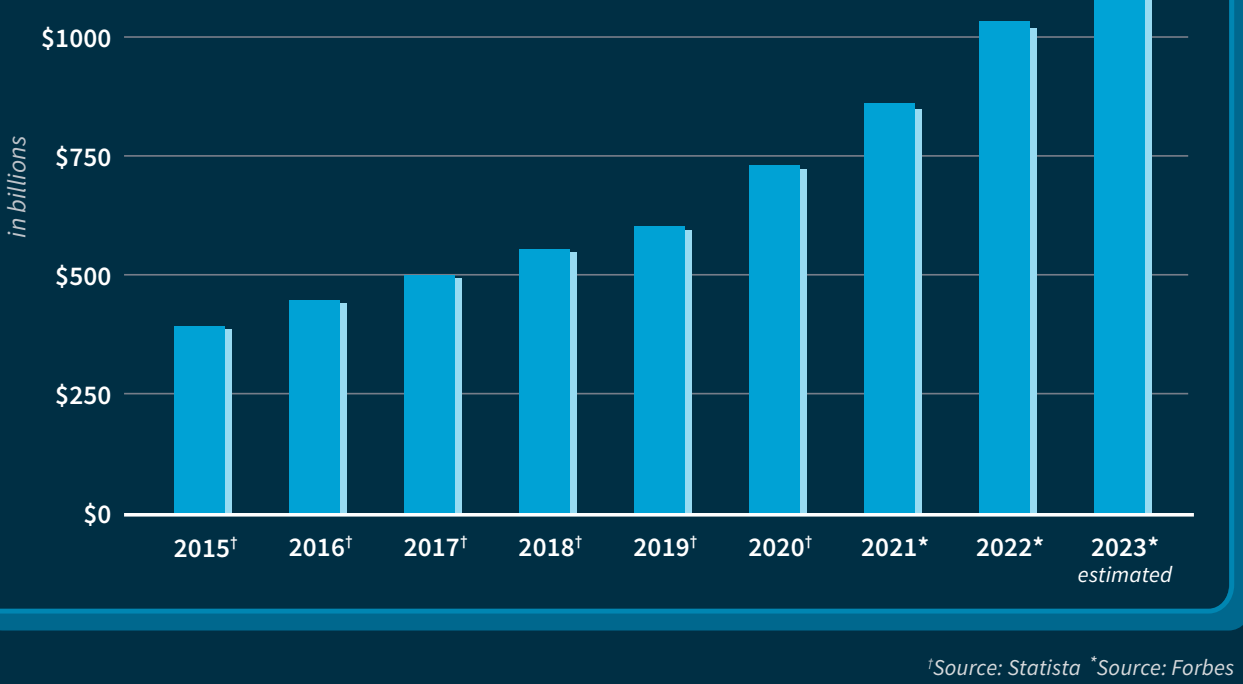
Onsite teams are feeling the squeeze from resident packages. Year after year, multifamily sees more resident packages with no signs of slowing. Our onsite teams can only take so much pressure before showing signs of cracking.

The data clearly shows a picture of a growing package burden and an overwhelmed onsite team.

### residents are ordering more and more... and more...



### e-commerce is growing and not slowing



In 2022, over **2.3 billion** CONSUMERS

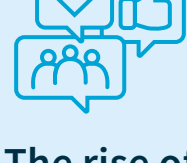
made at least one purchase from an online retailer.

### why?



#### The growth of mobile shopping

Extensive use of smartphones and tablets leads to more frequent mobile shopping.



#### The rise of social media

Influencers and social networks are pushing more shopping, from Instagram to Facebook Ads and even TikTok Shop!



#### The increasing popularity of subscription services

From HelloFresh to BarkBox and Stitch Fix, consumers are opting to be set up on auto ship.

### multifamily is feeling the squeeze

Onsite teams spend too much time managing resident packages:

**10+ hrs**

PER WEEK

How many hours does your team spend on packages? Estimate your package burden with [our ROI Calculator](#)

#### estimate your savings

Enter the number of units in your community

**300**

total units -->

#### what you'll save with fetch

**\$41,058**  
PER YEAR

**6 hours**  
PER DAY

**2281 hours**  
PER YEAR

### multifamily employees are officially overwhelmed.

**57%**  
report feeling stressed at work.



**45%**  
report feeling burned out.

#### Why are we feeling the pressure?

Resident complaints | 64%

Maintaining resident satisfaction | 61%

Meeting deadlines | 59%

Dealing with difficult residents | 57%

Lack of resources | 56%

### It's clear:

Onsite teams are overwhelmed. The burden of resident packages isn't helping, either.

With resident package deliveries on the rise and no sign of slowing down, the industry needs a real solution to handle this challenge once and for all.

**Fetch solves your onsite package problem completely.**

Chat with us today to learn how our offsite package solution relieves your team's stress instantly!

**let's chat**