



fetch



3 ways to know you're "over it" with managing packages in multifamily

Juggling an endless influx of packages. Dealing with porch pirates. Spending hours every day managing deliveries. These are just a few signs your community may have outgrown its current package management system.

If you're constantly fielding complaints from residents about stolen packages, or struggling to keep up with the ever-increasing volume of deliveries, then you're probably watching your staff productivity plummet. It might just be time to rethink your approach to package management.

Here are three indicators that it's time to take control of your multifamily property's operations:



"There are just too many packages!"

The average American consumer received

674

PACKAGES IN 2023

(source)

Fetch Houston communities receive an average of

136

PACKAGES PER WEEK

Package volume is expected to increase by up to

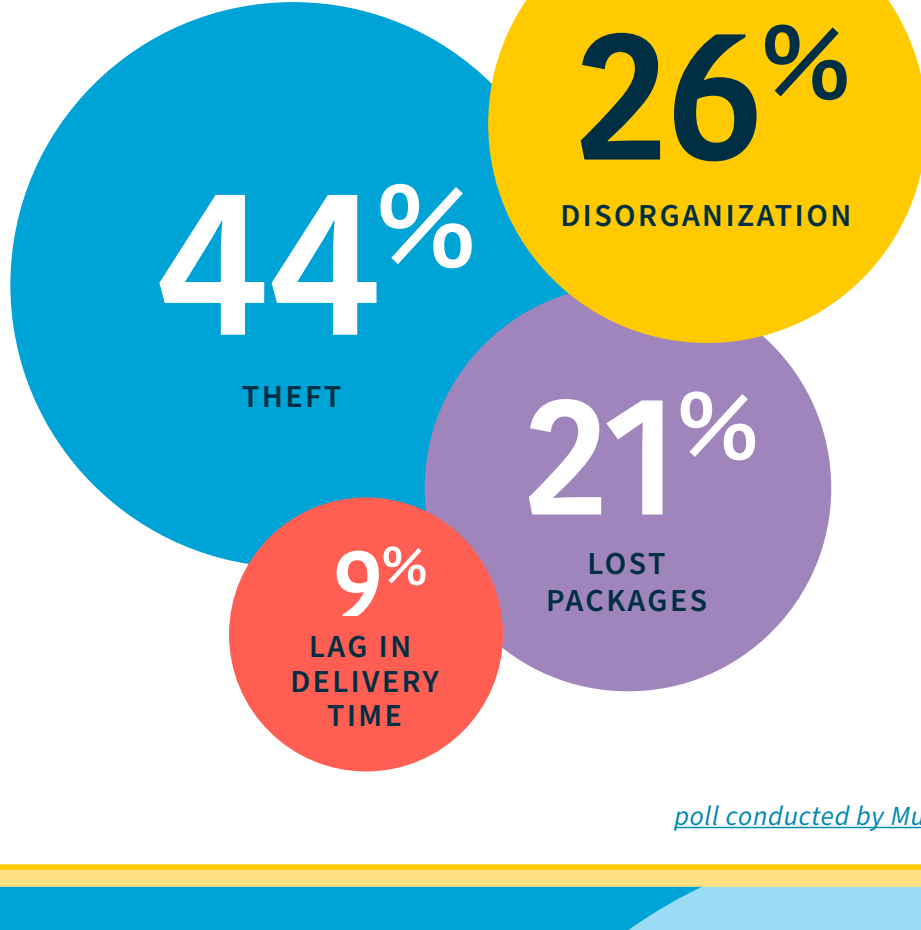
21%

DURING THE HOLIDAYS IN 2023

The rapid growth in package volume is putting a strain on existing package management systems, leaving many property teams looking for a scalable solution to handle the increasing workload.

"We're being targeted by porch pirates!"

what is the most common problem residents have with your current package solution?



79%

of Americans had been a victim of package theft from Nov. '21-Nov. '22

(source)

Americans lost more than

260

million packages to porch pirates from Nov. '21-Nov. '22

(source)

That works out to nearly

\$59

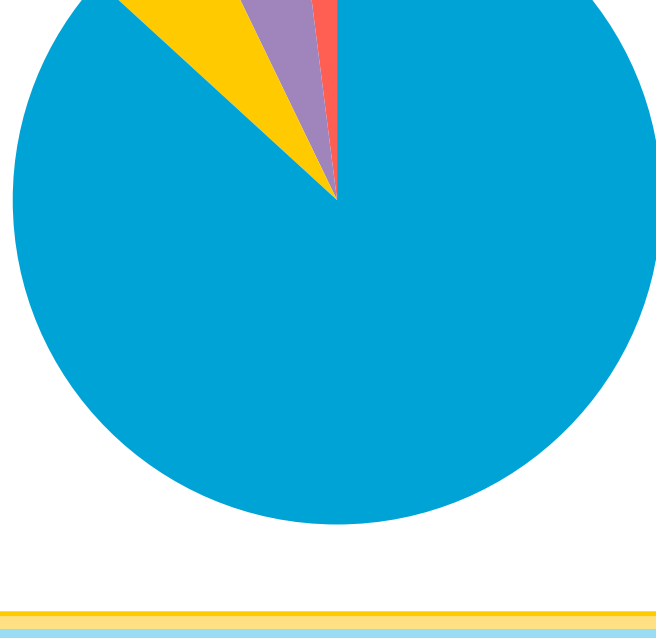
per person in the U.S. annually



"My team can't do their job because of packages!"

Overflow of package volume slows daily operations and creates challenges for team members

what is not a CORE responsibility for on-site team members



According to multifamily professionals, package management isn't considered a core responsibility for onsite teams, yet...

Onsite teams can spend up to

6

hours per day sorting, storing and tracking packages.



Each package can take up to

20

minutes for onsite teams to store, sort and track.

(source)

How many hours does your team spend on packages? Estimate your package burden with our [ROI Calculator](#)

estimate your savings

Enter the number of units in your community

300

total units -->

what you'll save with fetch

\$41,058

PER YEAR

6 HOURS

PER DAY

2281 HOURS

PER YEAR

If you're "over it" with packages, you're not alone. 82% of multifamily property managers consider package management to be a "major pain point."

(source)

The great news is that you can solve this problem pretty easily. There are several solutions that could work. Which one is the best for your community to permanently solve the package problem?



Fetch is a modern package solution with unlimited scalability.

We take all liability off of your community and help to streamline your operational flow. Let's talk about your community's unique needs and figure out a solution.

let's chat



fetch